



Dear Parents and Carers,

Welcome back to the start of the school year and a special greeting to all our new friends who have joined us this term. Settling in at the start of the term can be a difficult time for everyone. I would like to extend my thanks to our families, who have patiently worked with staff in order to make this transition as successful as possible for the children, giving them the very best start.

Unfortunately, we are all still grappling with the Covid-19 pandemic and this is causing some disruptions to children's education and families livelihoods up and down the country. For the foreseeable future there will be certain protocols and restrictions in place that affect us all. We are keeping our procedures under close review at nursery and I'd like to say how much we appreciate your compliance with the measures we have put in place (e.g. face coverings in nursery). You are all helping each other by using these whilst socially distancing and using hand sanitiser.

I look forward to getting to know you all over the coming year.

Mrs Z Keating

(Interim Headteacher)



Primary School Applications

Remember, if your child is due to turn four before 31st August 2021, then you need to start considering your primary school choices now. You can apply for your school place online via Slough school

admissions. Applications can be made now and anytime up until mid -January 2021. We will send you some further information regarding this in the coming weeks.

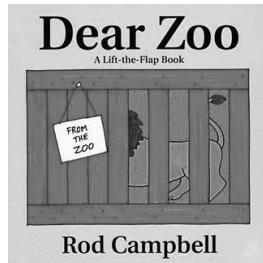
Help your community at Harvest

We value 'community' at our school and strongly believe we should look out for and support each other. Recent months have been particularly difficult for everyone and the global pandemic has seen many people lose jobs and their source of income. Given that this time of year is also a time traditionally associated with harvest we would like to collect donations for Slough food bank at the nursery over the next two weeks. The donations need to be non-perishable (dry foods such as cereal, rice, pasta or long life fruit juice, tea, coffee, sugar, and

various tinned goods). You can place your donations in the baskets on the verandah by the school entrance.



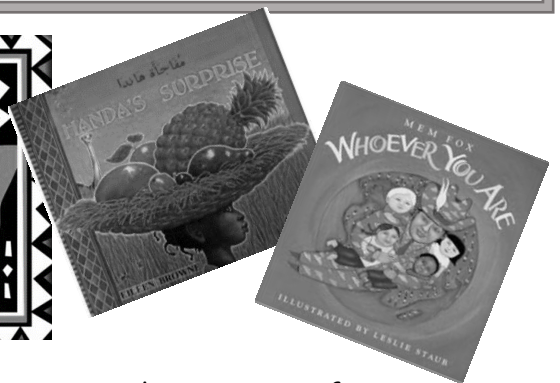
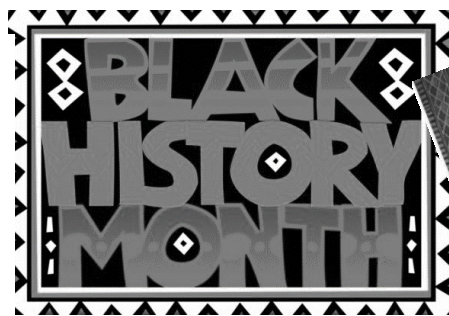
Dear Zoo



Over the next couple of weeks, children will be hearing and learning about the story 'Dear Zoo' and we have some story maps and a typed version of the story you can have to take home. This makes it easy to practice retelling the story with your child. It has lots of simple repeated phrases making it ideal for children to join in with.

1st - 31st October 2020

The month celebrates and recognises the contributions that black people have made to the UK over many generations.



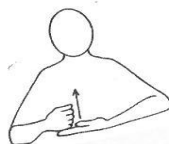
As part of recognising black history month, we are looking to expand our range of picture books at nursery to include ones with characters from a diverse range of backgrounds and stories that celebrate different cultures. If you know of any suitable books that you'd like to recommend then please do let the office know.

Communication and Language

At nursery, we use Makaton signs alongside spoken words to support children's understanding and ability to communicate their needs. Here are some useful words with the sign you can do at the same time as saying the word.



TO HELP (1)
(see video for examples of use)



MORE



Flat hand, palm down, covers top of other fist

TO EAT (1)



Tap lips twice with emphasis

